

## Pre-Loaded Double Door Wall Box

### (24-96 Fiber Optics)

Our double door wall boxes can be supplied fully loaded with adaptors and pigtail ready for the installer to take to site. There is a diverse range of adaptor and pigtail types to sure that almost all applications can be catered for. The double door feature allows independent secure access to the both incoming fibre cable and patching areas of the wall box.

#### FEATURES

- 2 x Cable entry points top and bottom
- Patch cord entry or exit top and bottom
- Includes two separate unique locks for security

#### REF: WBDDSCSX24

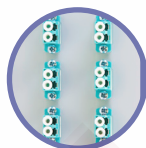
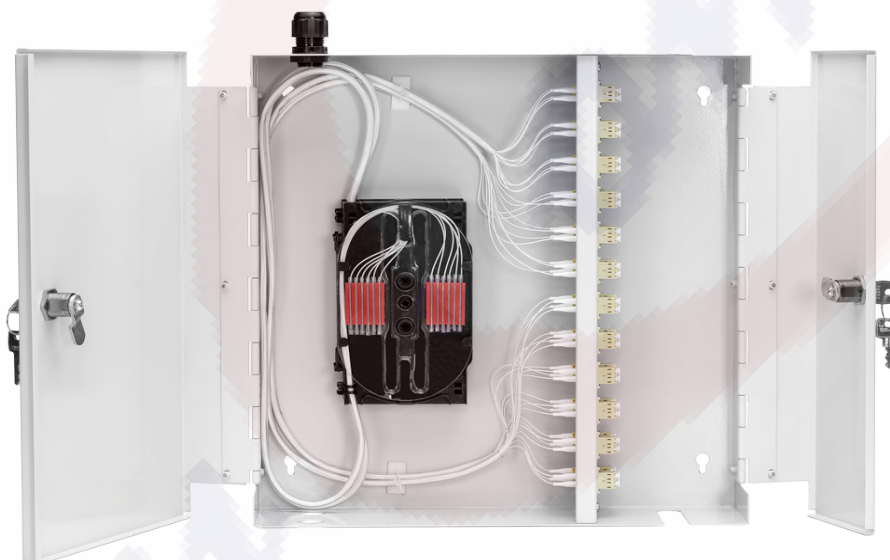
(24 SC Simplex - 24 LD Duplex  
(Hasta 48FO)

#### REF: WBDDSCDX24

(24 SC Duplex - 24 LD Quad  
(Hasta 96FO)

#### REF: WBDDSTSX48

(48 ST Simplex - 48 FC Simplex  
(Hasta 48FO)



LC Duplex



LC Quad



ST



SC Duplex



FC

#### TECHNICAL SPECIFICATIONS

Height x Width x Depth	H 360mm x W 360mm x D 85mm
Adaptor Types	LC, SC, ST & FC